



Project Name:
Type:

RP3012 (RESIDENTIAL)

Ordering Matrix

Environmental Lighting for Architecture, Inc.

1	2	3	4			
RP3012	/	A	/		/	

*NOTE: (3X)1/2"Ø ANCHOR BOLTS REQUIRED - NOT INCLUDED




1. Base Matrix #: Description:
RP3012 Aluminum Constructed Base.

2. Pole Matrix #: Description:
Style **A** 3" Round Straight Smooth w/ .125" Wall

*NOTE: Other options, please consult factor.

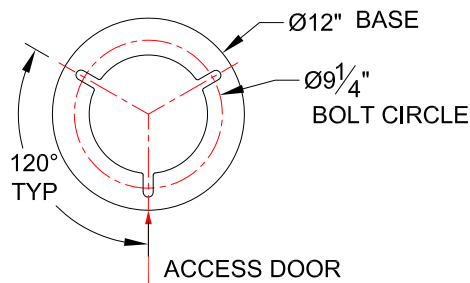
3. Height Description:
Matrix #: **72 inches Min - 96 inches Max**
Height in Inches

*NOTE: Other options, please consult factor.

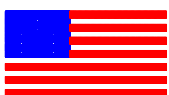
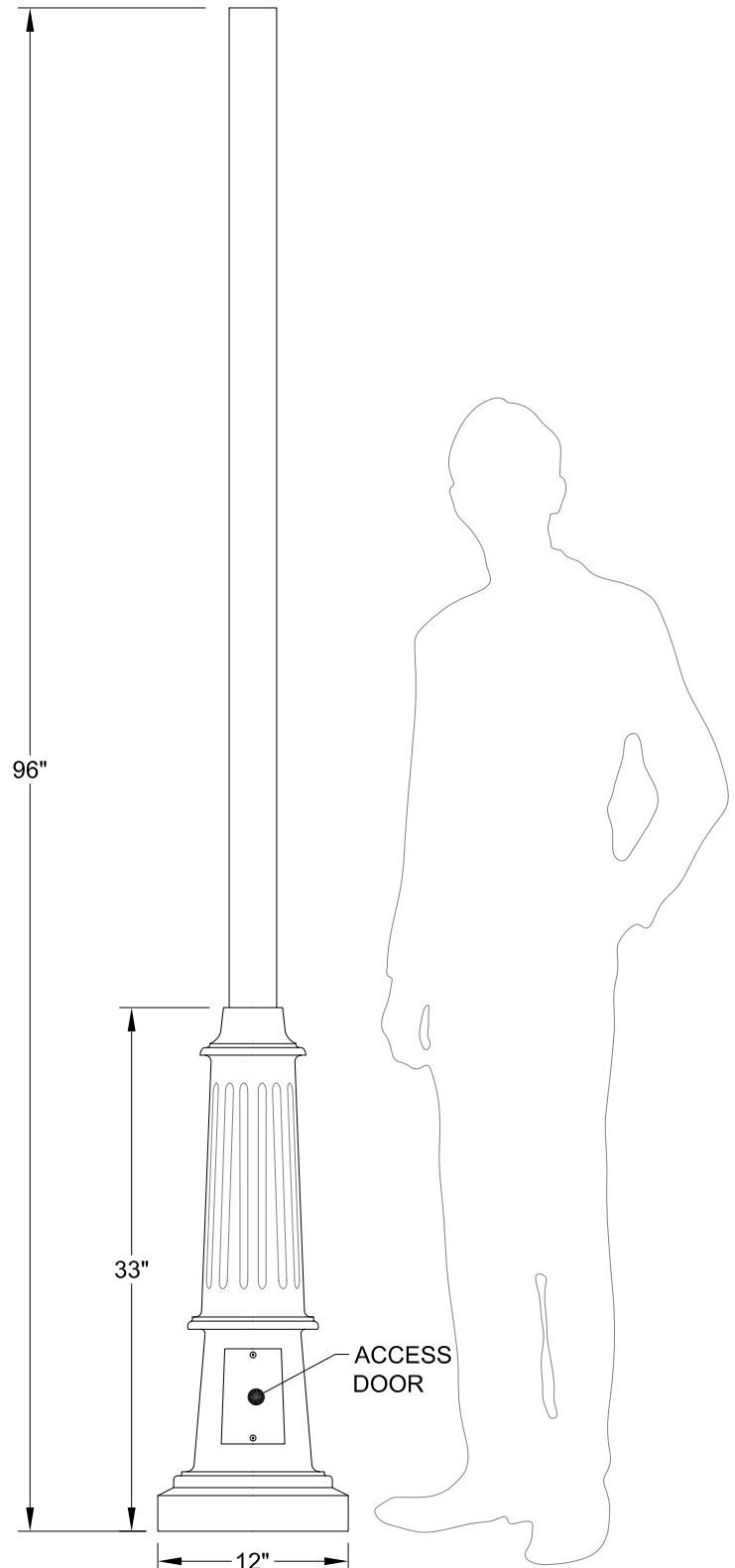
4. Finish Matrix #: Description:
POWDER **DB** Dark Bronze 
COAT **MN** Midnight 
 SS Smoke Shadow 

*NOTE: Other options, please consult factor.

*NOTE: (3X)1/2"Ø ANCHOR BOLTS REQUIRED - NOT INCLUDED



MOUNTING DETAIL



Pole is "Buy American Act" Complaint. Proudly Made in the U.S.A.