



Project Name:
Type:

RP3009 (RESIDENTIAL)

Ordering Matrix

Environmental Lighting for Architecture, Inc.

1	2	3	4
RP3009	/ A	/	/

1. Base Matrix #: **RP3009** Description: Aluminum Constructed Pole with Decorative Slip-Over Base.




2. Pole Style Matrix #: **A** Description: 3" Round Straight Smooth w/ .125" Wall

*NOTE: Other options, please consult factor.

3. Height Description: Height in Inches Matrix #: **72 inches Min - 96 inches Max**

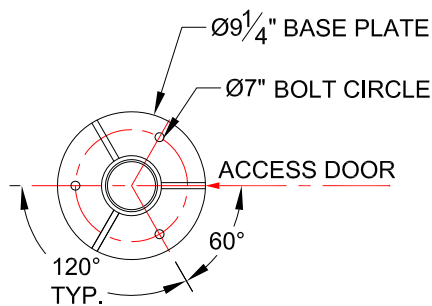
*NOTE: Other options, please consult factor.

4. Finish Matrix #: Description: POWDER COAT

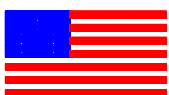
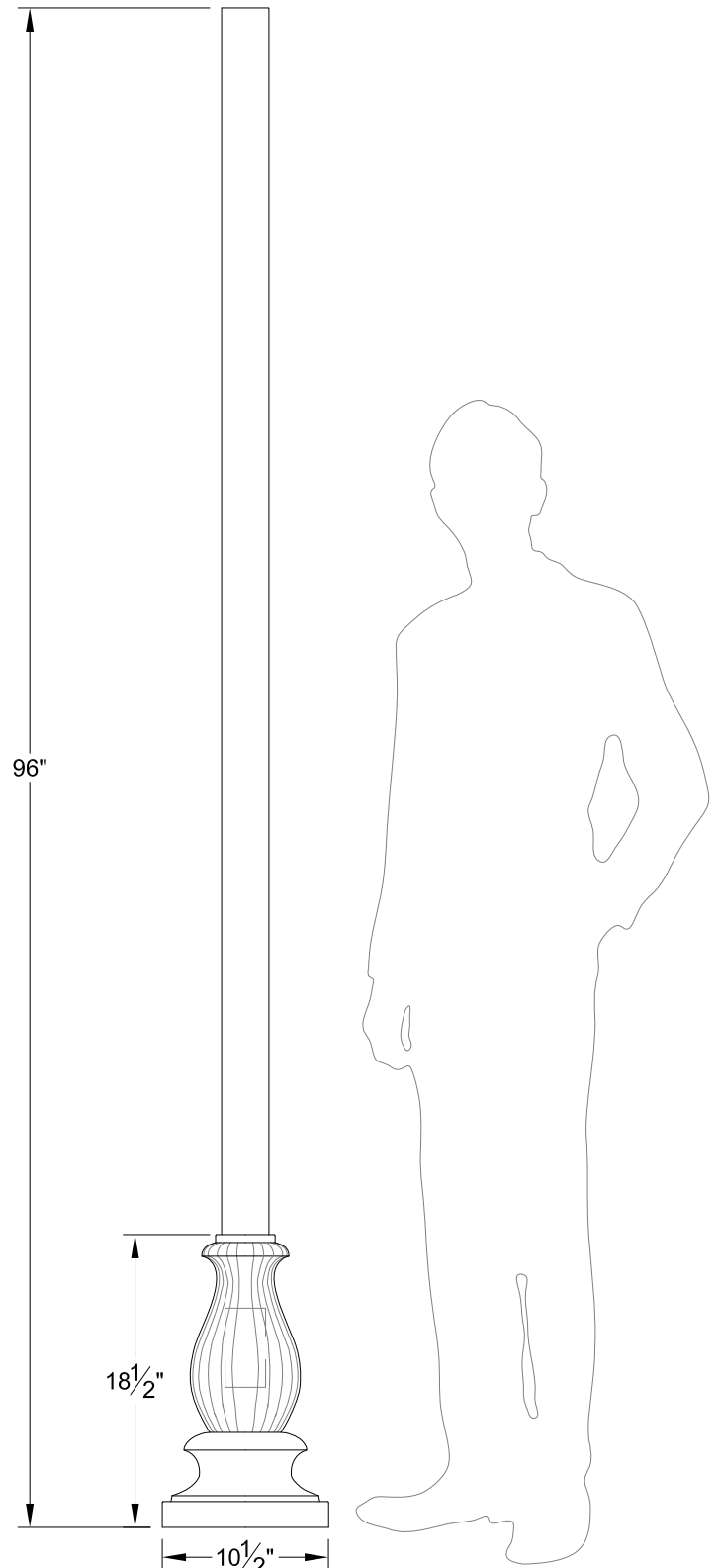
DB	Dark Bronze	
MN	Midnight	
SS	Smoke Shadow	

*NOTE: Other options, please consult factor.

*NOTE: (3X)1/2"Ø ANCHOR BOLTS REQUIRED - NOT INCLUDED



MOUNTING DETAIL



Pole is "Buy American Act" Complaint. Proudly Made in the U.S.A.