

Project Name:
Type:

Bollard - BOL3618R-VL

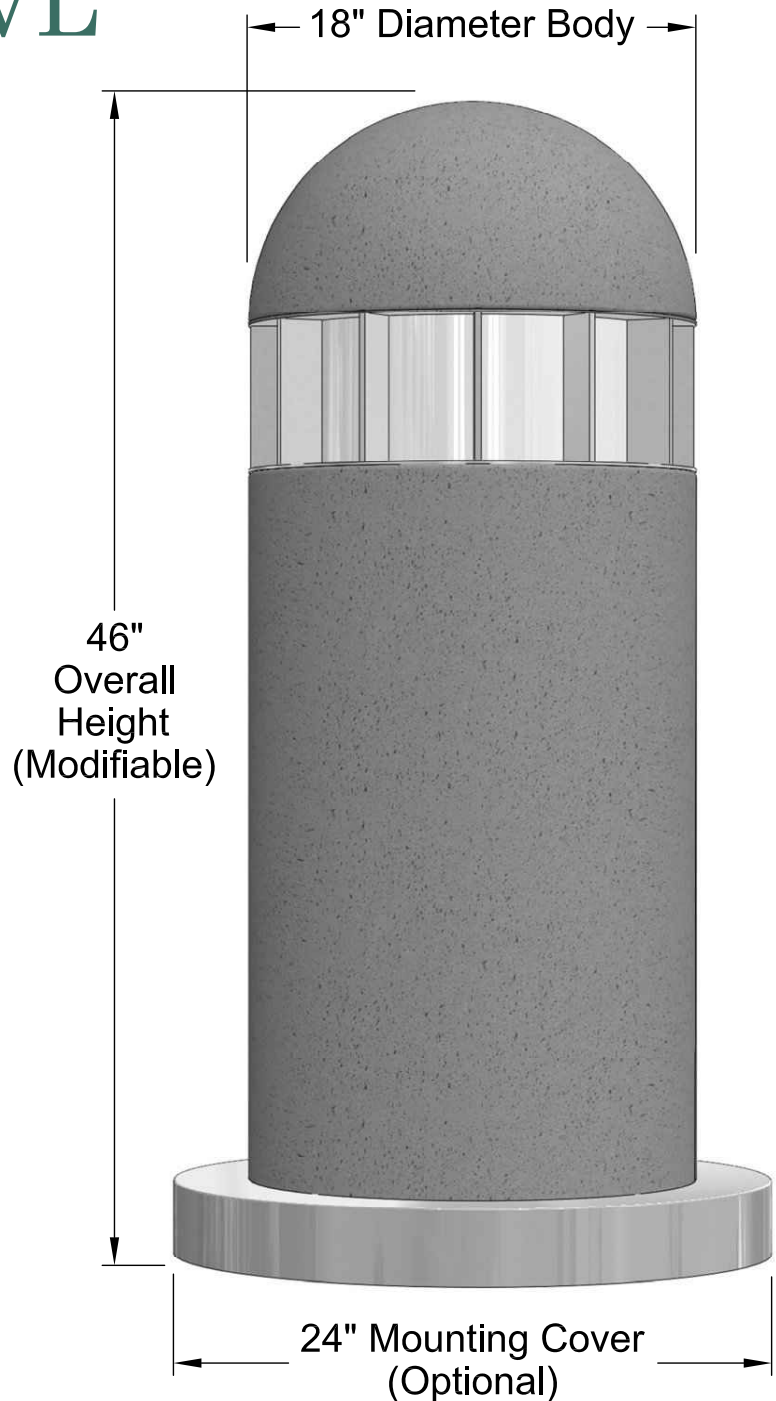
Ordering Matrix

Environmental Lighting for Architecture, Inc.

1	2	3	4	5	6	7	8	9	10
BOL3618R-VL									

BOL3618R-VL

The BOL3618R-VL is a round concrete bollard with a round top, and can be specified with or without a light source. As a lighted bollard the BOL3618F-R is available with up to 75 watts of LED, which generates 6529 lumens, and is available in Type V or Type III distributions. Other light sources are also available. The BOL3618R-VL is available with a variety of lens options with standard vertical louvers for directing the light out for wider spread. The BOL3618R-VL is ideal for sidewalks, walkways at various sites, outdoor shopping malls, parks, schools and universities, government buildings, and much more.



Bollard is "Buy America Act" Compliant Proudly Made in the U.S.A.



Project Name:
Type:

Bollard - BOL3618R-VL

Ordering Matrix

Environmental Lighting for Architecture, Inc.

1	2	3	4	5	6	7	8	9	10
BOL3618R-VL									

1. Fixture:

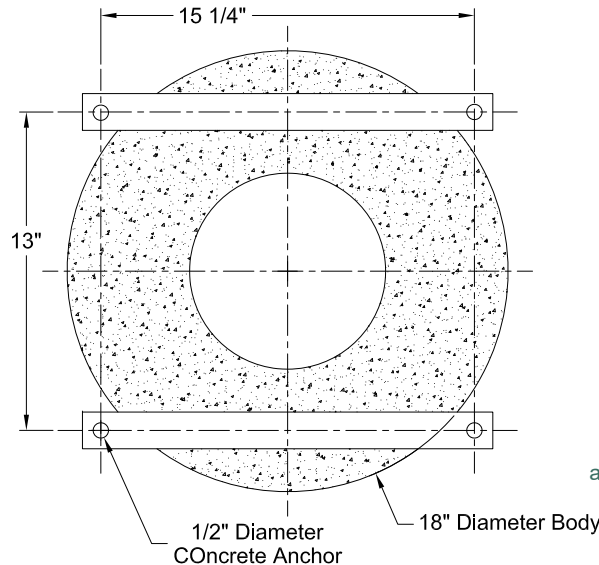
Matrix #: **BOL3618R-VL** **Description:** Concrete Body Bollard

2. Size:

Matrix #: **46** **Description:** 46" Overall Height (Standard)
Custom Bollard Height (Inches)

3. Distribution:

Matrix #: **V3*** **Description:** Type 3 - Vertical
V5 Type 5 - Vertical



Mounting Circle
Applies to **Above Ground**
and **Below Surface** mounting

* Distribution direction is field adjustable

4. Lamping:	Matrix #:	Wattage*	Description:	Lumens
	15LED	15 Watts	LED Tape (4.4w/ft)	1306
	25LED	25 Watts	LED Tape (4.4w/ft)	2176
	40LED	40 Watts	LED Tape (4.4w/ft)	3482
	65LED	65 Watts	LED Tape (4.4w/ft)	5658
	75LED	75 Watts	LED Tape (4.4w/ft)	6529
	INC	100W Max.	Medium Base Socket	
	HID*	100W Max.	Contact Factory for Details	
	NL	-----	Non-Lit	

1) Dimming options available upon request.

*Other wattages & lumens available upon request.

5. Color Temps (k):	Matrix #:	Description:
	AM*	Amber Color Temp
	27	2700k Color Temp
	30	3000k Color Temp
	40	4000k Color Temp
	50	5000k Color Temp

Note:
Other color temperatures & RGB's available upon request.
*Amber not available in corn cobs.

6. Voltage:	Matrix #:	Description:
	120	120VAC
	208	208VAC
	240	240VAC
	277	277VAC
	347*	347VAC
	480*	480VAC

*Contact ELA for details.

7. Lens:	Matrix #:	Description:
	CA	Clear Acrylic
	CP	Clear Polycarbonate
	FA	Frosted Acrylic
	FP	Frosted Polycarbonate
	OA	Opal Acrylic

8. Head Finish:	Matrix #:	Description:
(Standard Powder Coat)	AG	Augustine Green
	CC	Charcoal
	DB	Dark Bronze
	GY	Architectural Grey
	MG	Malaga Green
	MN	Black - Midnight
	PW	Pewter
	SB	Statuary Bronze
	VL	Village Green
	WH	White

Note: Custom colors available upon request.

9. Body Finish:	Matrix #:	Description:
	NC	Natural Concrete
	LA	Light Aggregate
	MA	Medium Aggregate
	HA	Heavy Aggregate

Note:
- Custom color tint finishes available upon request.
- Matte or Satin Anti-graffiti sealant available upon request

10. Options:	Matrix #:	Description:	Matrix #:	Description:
	BBU*	Battery Backup	HSS	House Side Shield
	PCB	Photocell Button	SB**	Security Bollard

1. BBU test button location shall have visibility for testing on site. Consult factory for placement location.

2. BBU LED lumen output reduced in BBU mode.

3. Consult factory for Security Bollard options.

ELA Warranty Info: Environmental Lighting for Architecture, Inc. (ELA) offers a Five (5) Year Warranty on all products exclusively manufactured by ELA. Furthermore, ELA offers a Five (5) Year Warranty on all LED and LED components; and guarantees that no fewer than 90% of the diodes in each fixture will still be operating during this time. Please contact ELA for the details of each warranty.