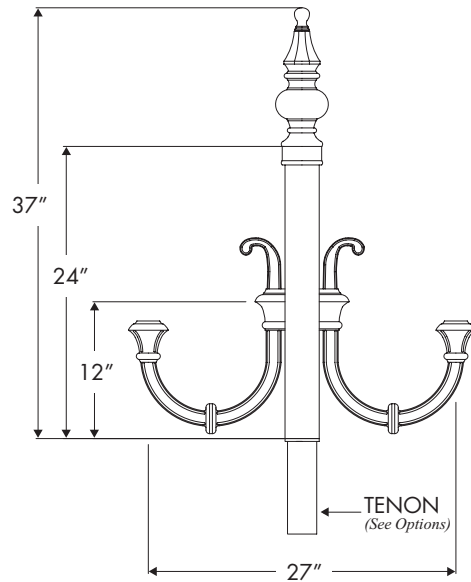
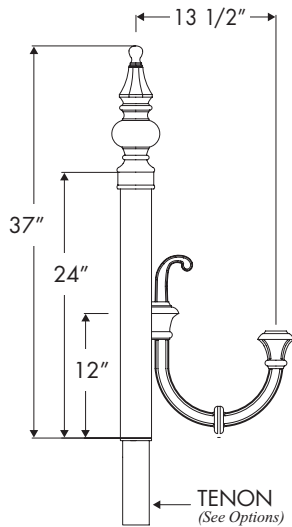


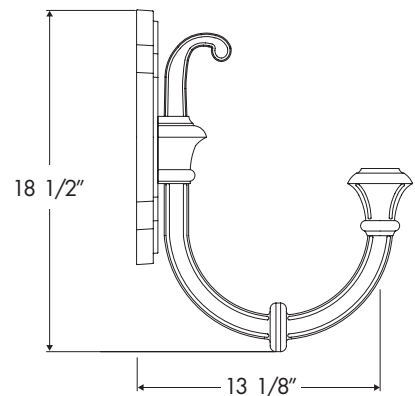
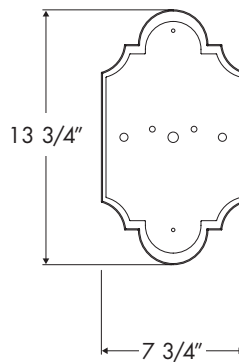
Note: Specifications are subject to change without notice. Always consult factory.



CR-8B



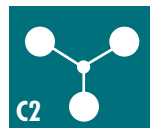
CR-8A



BR-2

Durable Cast and Extruded Aluminum Construction

CONFIGURATIONS



Options

Cross Arm tenon is fitted for 3" and 4" diameter poles per request.

Environmental Lighting for Architecture, Inc.

17891 Arenth Avenue, City of Industry, CA 91748-1197

626.965.0821 • 800.423.6561 • fax 626.965.9494

www.ela-lighting.com