



Project Name:
Type:

## Bollard - BOL5020F-90

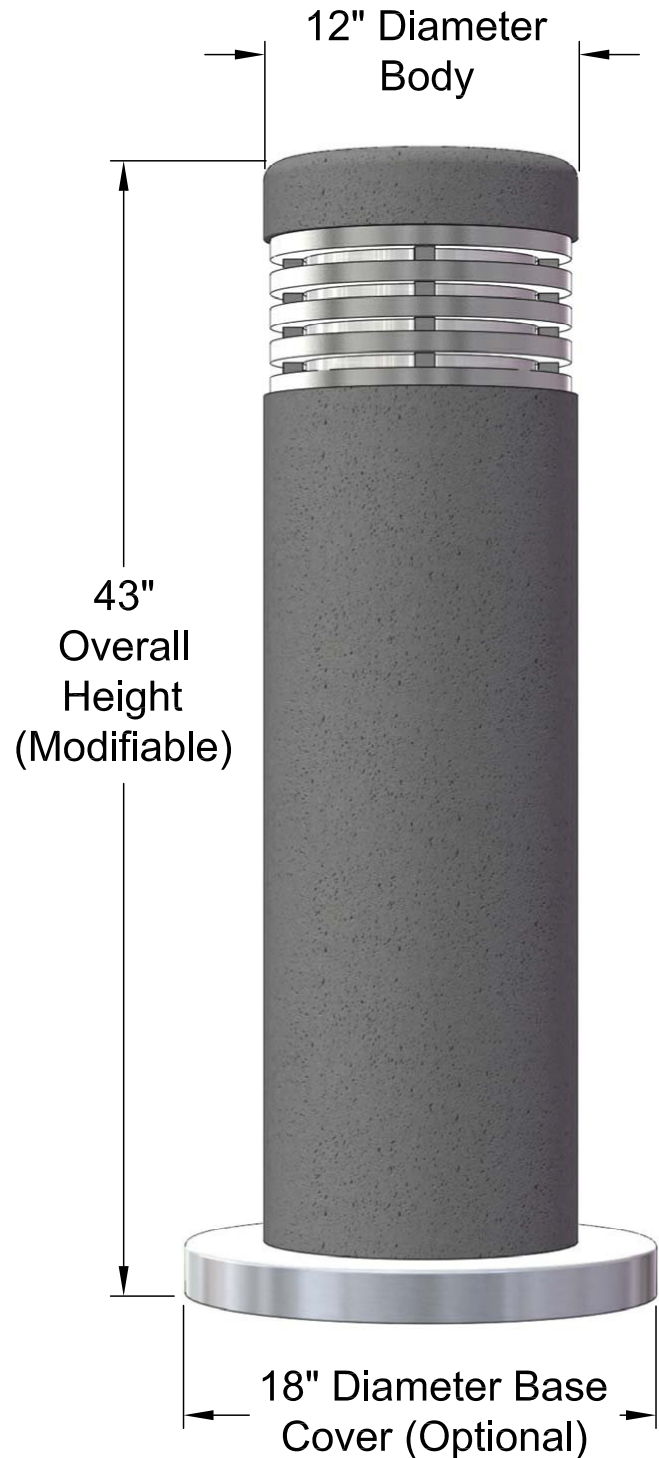
### Ordering Matrix

Environmental Lighting for Architecture, Inc.

1	2	3	4	5	6	7	8	9	10
BOL5020F-90									

# BOL5020F-90

The BOL5020F-90 is a round concrete bollard with a flat top, and can be specified with or without a light source. As a lighted bollard the BOL5020F-90 is available with up to 65 watts of LED, which generates 5658 lumens, and is available in Type V or Type III distributions. Other light sources are also available. The BOL5020F-90 is available with a variety of lens options with standard horizontal struts for directing the light out for wider spread. The BOL5020F-90 is ideal for sidewalks, walkways at various sites, outdoor shopping malls, parks, schools and universities, government buildings, and much more.



Bollard is "Buy America Act" Compliant Proudly Made in the U.S.A.



Project Name:
Type:

# Bollard - BOL5020F-90

## Ordering Matrix

Environmental Lighting for Architecture, Inc.

1	2	3	4	5	6	7	8	9	10
BOL5020F-90									

### 1. Fixture:

**Matrix #:** **BOL5020F-90** **Description:** Concrete Body Bollard

### 2. Size:

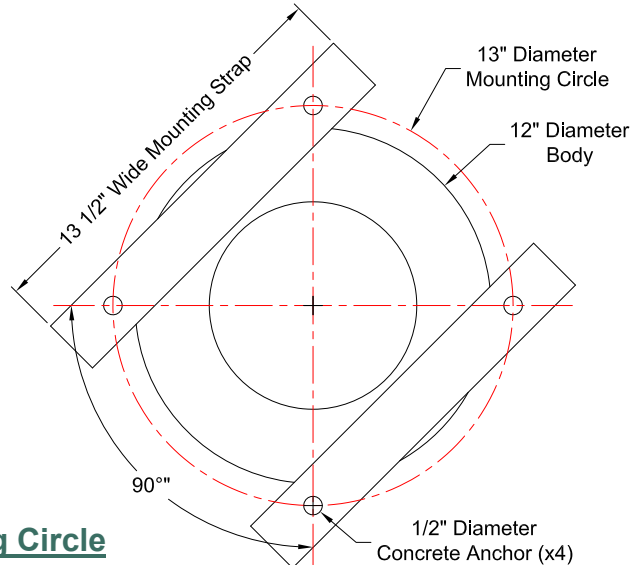
**Matrix #:** **43** **Description:** 43" Overall Height (Standard)  
Custom Bollard Height (Inches)

### 3. Distribution:

**Matrix #:** **V3\*** **Description:** Type 3 - Vertical  
**V5** Type 5 - Vertical

\* Distribution direction is field adjustable

### Mounting Circle



4. Lamping:	Matrix #:	Wattage*	Description:	Lumens
	<b>15LED</b>	15 Watts	LED Tape (4.4w/ft)	1306
	<b>25LED</b>	25 Watts	LED Tape (4.4w/ft)	2176
	<b>40LED</b>	40 Watts	LED Tape (4.4w/ft)	3482
	<b>65LED</b>	65 Watts	LED Tape (4.4w/ft)	5658
	<b>INC</b>	100W Max.	Medium Base Socket	
	<b>HID*</b>	100W Max.	Contact Factory for Details	
	<b>NL</b>	-----	Non-Lit	

1) Dimming options available upon request.  
\*Other wattages & lumens available upon request.

5. Color Temps (k):	Matrix #:	Description:
	<b>AM*</b>	Amber Color Temp
	<b>27</b>	2700k Color Temp
	<b>30</b>	3000k Color Temp
	<b>40</b>	4000k Color Temp
	<b>50</b>	5000k Color Temp

Note:  
Other color temperatures & RGB's available upon request.  
\*Amber not available in corn cobs.

6. Voltage:	Matrix #:	Description:
	<b>120</b>	120VAC
	<b>208</b>	208VAC
	<b>240</b>	240VAC
	<b>277</b>	277VAC
	<b>347*</b>	347VAC
	<b>480*</b>	480VAC

\*Contact ELA for details.

7. Lens:	Matrix #:	Description:
	<b>CA</b>	Clear Acrylic
	<b>CP</b>	Clear Polycarbonate
	<b>FA</b>	Frosted Acrylic
	<b>FP</b>	Frosted Polycarbonate
	<b>OA</b>	Opal Acrylic

8. Head Finish:	Matrix #:	Description:
(Standard Powder Coat)	<b>AG</b>	Augustine Green
	<b>CC</b>	Charcoal
	<b>DB</b>	Dark Bronze
	<b>GY</b>	Architectural Grey
	<b>MG</b>	Malaga Green
	<b>MN</b>	Black - Midnight
	<b>PW</b>	Pewter
	<b>SB</b>	Statuary Bronze
	<b>VL</b>	Village Green
	<b>WH</b>	White

Note: Custom colors available upon request.

9. Body Finish:	Matrix #:	Description:
	<b>NC</b>	Natural Concrete
	<b>LA</b>	Light Aggregate
	<b>MA</b>	Medium Aggregate
	<b>HA</b>	Heavy Aggregate

Note:  
- Custom color tint finishes available upon request.  
- Matte or Satin Anti-graffiti sealant available upon request

10. Options:	Matrix #:	Description:	Matrix #:	Description:
	<b>BBU*</b>	Battery Backup	<b>HSS</b>	House Side Shield
	<b>PCB</b>	Photocell Button	<b>SB**</b>	Security Bollard

1. BBU test button location shall have visibility for testing on site. Consult factory for placement location.

2. BBU LED lumen output reduced in BBU mode.

3. Consult factory for Security Bollard options.

**ELA Warranty Info:** Environmental Lighting for Architecture, Inc. (ELA) offers a Five (5) Year Warranty on all products exclusively manufactured by ELA. Furthermore, ELA offers a Five (5) Year Warranty on all LED and LED components; and guarantees that no fewer than 90% of the diodes in each fixture will still be operating during this time. Please contact ELA for the details of each warranty.