



Project Name:
Type:

Bollard - BOL4308

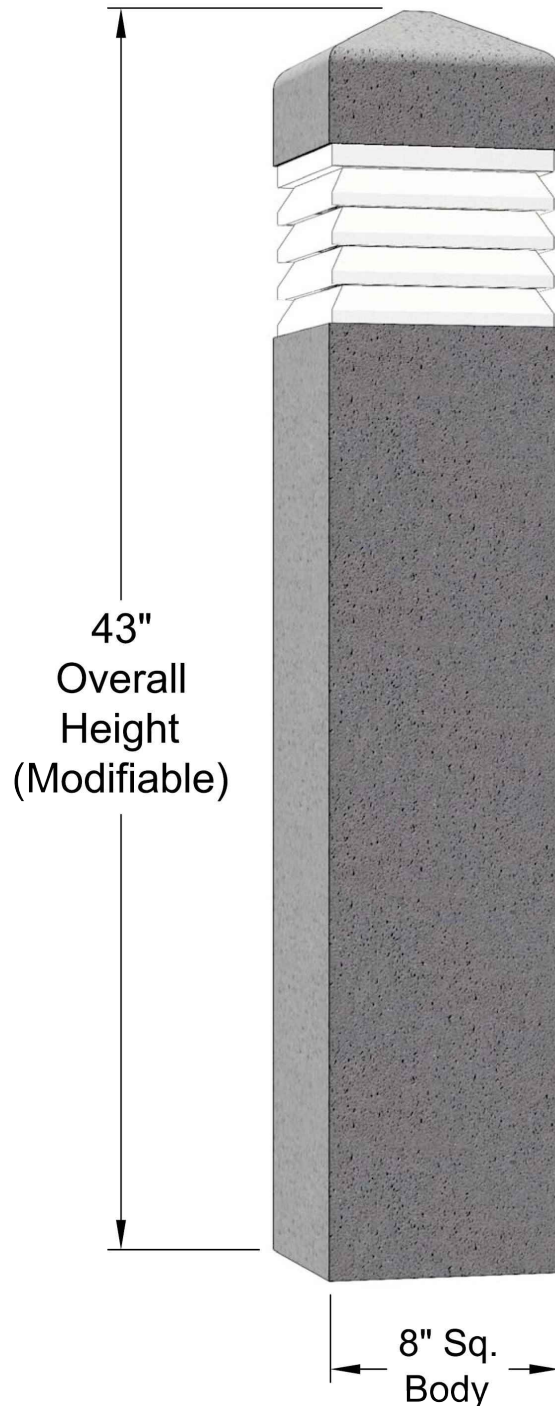
Ordering Matrix

Environmental Lighting for Architecture, Inc.

1	2	3	4	5	6	7	8	9	10
BOL4308									

BOL4308

The BOL4308 is a square concrete bollard with a removable beveled top, and can be specified with or without a light source. As a lighted bollard the BOL4308 is available with up to 40 watts of LED, which generates 3482 lumens, and is available in Type V or Type III distributions. Other light sources are also available. The BOL4308 is available with a variety of lens options with standard horizontal louvers for directing the light down. The BOL4308 is ideal for sidewalks, walkways at various sites, outdoor shopping malls, parks, schools and universities, government buildings, and much more.



Bollard is "Buy America Act" Compliant Proudly Made in the U.S.A.



Project Name:
Type:

Bollard - BOL4308

Ordering Matrix

Environmental Lighting for Architecture, Inc.

1	2	3	4	5	6	7	8	9	10
BOL4308									

1. Fixture:

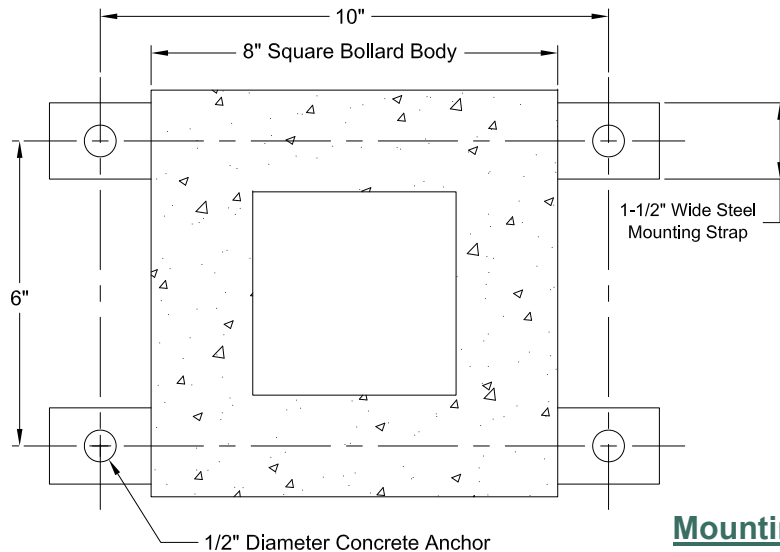
Matrix #: **BOL4308**
Description: Concrete Body Bollard

2. Size:

Matrix #: **43**
Description: 43" Overall Height
XX Customer Determined (Inches)

3. Distribution:

Matrix #: **V3***
Description: Type 3 - Vertical
V5 Type 5 - Vertical



Mounting

Applies to **Above Ground**
and **Below Surface** mounting

* Distribution direction is field adjustable

4. Lamping:	Matrix #:	Wattage*	Description:	Lumens	5. Color Temps (k):	Matrix #:	Description:
	15LED	15 Watts	LED Tape (4.4w/ft)	1306		AM*	Amber Color Temp
	25LED	25 Watts	LED Tape (4.4w/ft)	2176		27	2700k Color Temp
	40LED	40 Watts	LED Tape (4.4w/ft)	3482		30	3000k Color Temp
	INC	Up to 50W	Medium Base Socket			40	4000k Color Temp
	NL	-----	Non-Lit			50	5000k Color Temp

1) Dimming options available upon request.

*Other wattages & lumens available upon request.

Note:
Other color temperatures & RGB's available upon request.
*Amber not available in corn cobs.

6. Voltage:	Matrix #:	Description:	7. Lens:	Matrix #:	Description:
	120	120VAC		CA	Clear Acrylic
	208	208VAC		CP	Clear Polycarbonate
	240	240VAC		FA	Frosted Acrylic
	277	277VAC		FP	Frosted Polycarbonate
	347*	347VAC		OA	Opal Acrylic
	480*	480VAC			

*Contact ELA for details.

8. Head Finish:	Matrix #:	Description:	9. Body Finish:	Matrix #:	Description:
(Standard Powder Coat)	AG	Augustine Green		NC	Natural Concrete
	CC	Charcoal		LA	Light Aggregate
	DB	Dark Bronze		MA	Medium Aggregate
	GY	Architectural Grey		HA	Heavy Aggregate
	MG	Malaga Green			
	MN	Black - Midnight			
	PW	Pewter			
	SB	Statuary Bronze			
	VL	Village Green			
	WH	White			

Note: Custom colors available upon request.

Note:
- Custom color tint finishes available upon request.
- Matte or Satin Anti-graffiti sealant available upon request

10. Options:

1. BBU test button location shall have visibility for testing on site. Consult factory for placement location.

2. BBU LED lumen output reduced in BBU mode.

3. Consult factory for Security Bollard options.

Matrix #:	Description:	Matrix #:	Description:
BBU*	Battery Backup	HSS	House Side Shield
PCB	Photocell Button	SB**	Security Bollard

ELA Warranty Info: Environmental Lighting for Architecture, Inc. (ELA) offers a Five (5) Year Warranty on all products exclusively manufactured by ELA. Furthermore, ELA offers a Five (5) Year Warranty on all LED and LED components; and guarantees that no fewer than 90% of the diodes in each fixture will still be operating during this time. Please contact ELA for the details of each warranty.