



Project Name:
Type:

Bollard - BOL5020F-VL

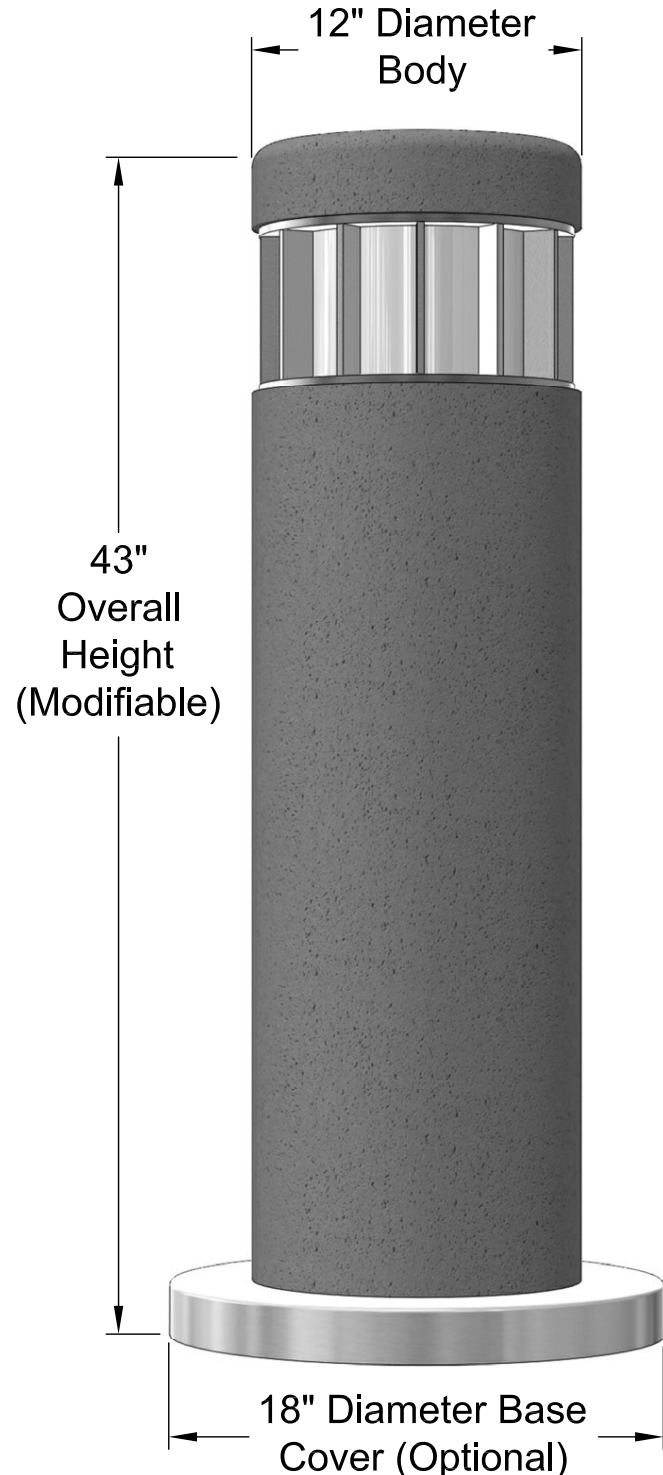
Ordering Matrix

Environmental Lighting for Architecture, Inc.

1	2	3	4	5	6	7	8	9	10
BOL5020R-VL									

BOL5020F-VL

The BOL5020F-VL is a round concrete bollard with a flat top, and can be specified with or without a light source. As a lighted bollard the BOL5020F-VL is available with up to 65 watts of LED, which generates 5658 lumens, and is available in Type V or Type III distributions. Other light sources are also available. The BOL5020F-VL is available with a variety of lens options with standard vertical louvers for directing the light out for wider spread. The BOL5020F-VL is ideal for sidewalks, walkways at various sites, outdoor shopping malls, parks, schools and universities, government buildings, and much more.



Bollard is "Buy America Act" Compliant Proudly Made in the U.S.A.



Project Name:
Type:

Bollard - BOL5020F-VL

Ordering Matrix

Environmental Lighting for Architecture, Inc.

1	2	3	4	5	6	7	8	9	10
BOL5020F-VL									

1. Fixture:

Matrix #: **BOL5020F-VL** **Description:** Concrete Body Bollard

2. Size:

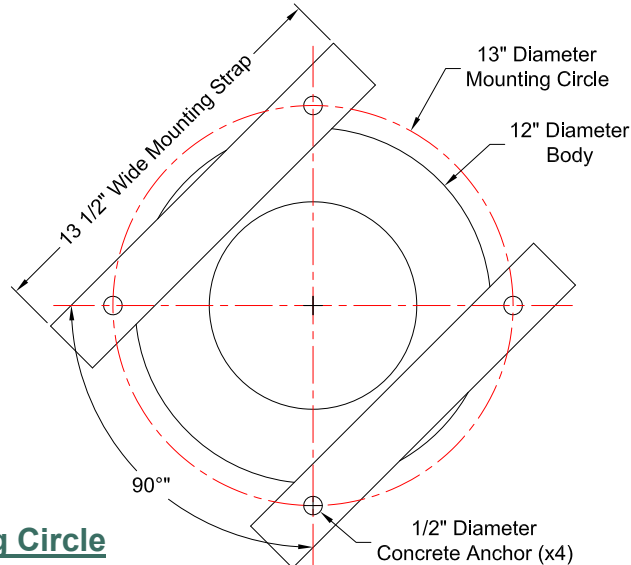
Matrix #: **43** **Description:** 43" Overall Height (Standard)
 Custom Bollard Height (Inches)

3. Distribution:

Matrix #: **V3*** **Description:** Type 3 - Vertical
V5 Type 5 - Vertical

* Distribution direction is field adjustable

Mounting Circle



4. Lamping:

Matrix #:	Wattage*	Description:	Lumens
15LED	15 Watts	LED Tape (4.4w/ft)	1306
25LED	25 Watts	LED Tape (4.4w/ft)	2176
40LED	40 Watts	LED Tape (4.4w/ft)	3482
65LED	65 Watts	LED Tape (4.4w/ft)	5658
INC	100W Max.	Medium Base Socket	
HID*	100W Max.	Contact Factory for Details	
NL	-----	Non-Lit	

1) Dimming options available upon request.
 *Other wattages & lumens available upon request.

5. Color Temps (k):

Matrix #:	Description:
AM*	Amber Color Temp
27	2700k Color Temp
30	3000k Color Temp
40	4000k Color Temp
50	5000k Color Temp

Note:
 Other color temperatures & RGB's available upon request.
 *Amber not available in corn cobs.

6. Voltage:

Matrix #:	Description:
120	120VAC
208	208VAC
240	240VAC
277	277VAC
347*	347VAC
480*	480VAC

*Contact ELA for details.

7. Lens:

Matrix #:	Description:
CA	Clear Acrylic
CP	Clear Polycarbonate
FA	Frosted Acrylic
FP	Frosted Polycarbonate
OA	Opal Acrylic

8. Head Finish:

(Standard Powder Coat)

Matrix #:	Description:
AG	Augustine Green
CC	Charcoal
DB	Dark Bronze
GY	Architectural Grey
MG	Malaga Green
MN	Black - Midnight
PW	Pewter
SB	Statuary Bronze
VL	Village Green
WH	White

Note: Custom colors available upon request.

9. Body Finish:

Matrix #:	Description:
NC	Natural Concrete
LA	Light Aggregate
MA	Medium Aggregate
HA	Heavy Aggregate

Note:
 - Custom color tint finishes available upon request.
 - Matte or Satin Anti-graffiti sealant available upon request

10. Options:

- BBU test button location shall have visibility for testing on site. Consult factory for placement location.
- BBU LED lumen output reduced in BBU mode.
- Consult factory for Security Bollard options.

Matrix #:	Description:	Matrix #:	Description:
BBU*	Battery Backup	HSS	House Side Shield
PCB	Photocell Button	SB**	Security Bollard

ELA Warranty Info:

Environmental Lighting for Architecture, Inc. (ELA) offers a Five (5) Year Warranty on all products exclusively manufactured by ELA. Furthermore, ELA offers a Five (5) Year Warranty on all LED and LED components; and guarantees that no fewer than 90% of the diodes in each fixture will still be operating during this time. Please contact ELA for the details of each warranty.